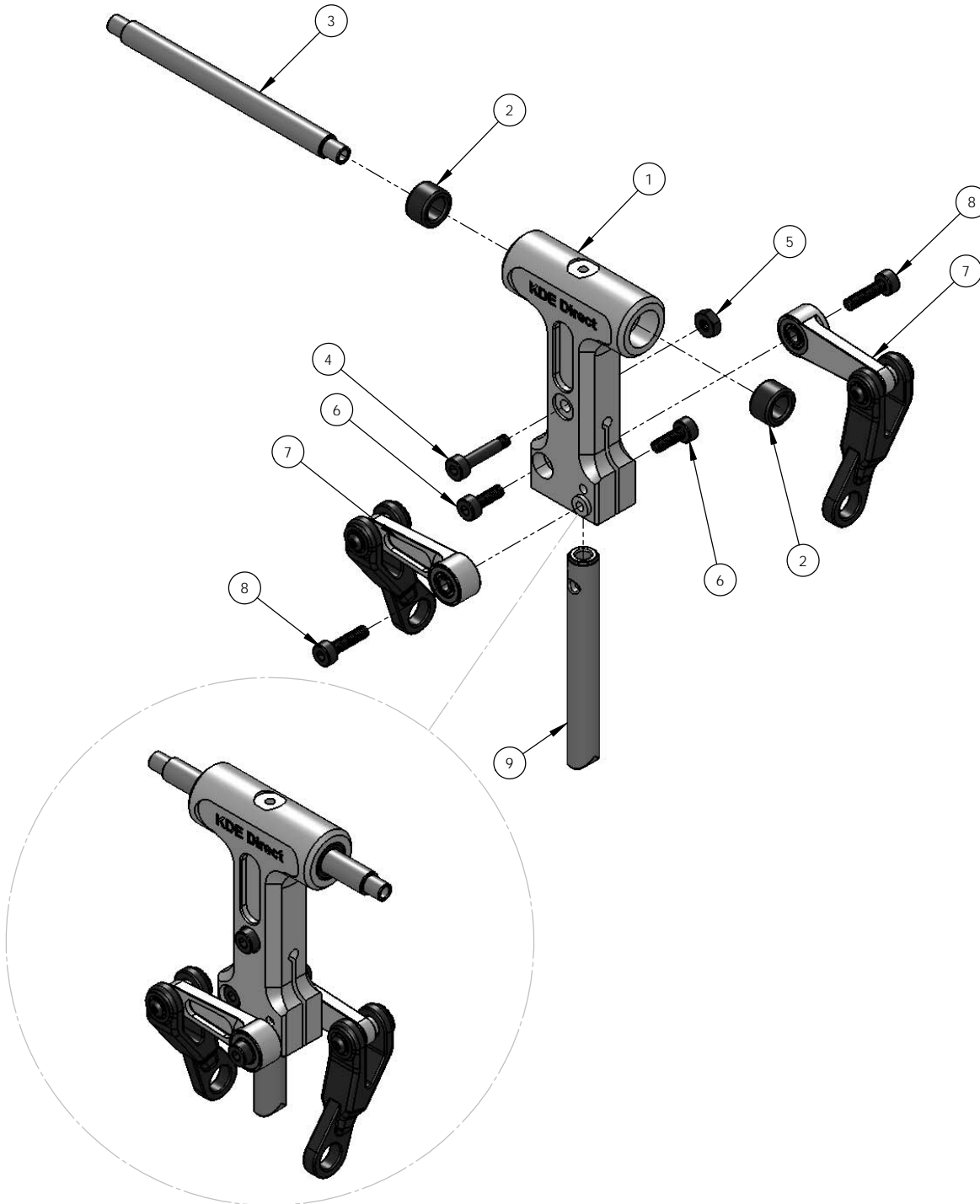


TREX450PRO SERIES FLYBARLESS MAIN ROTOR HOUSING AT450P-MRHFB (AL 6061-T6)



ITEM NO.	DESCRIPTION	QTY.
1	KDE DIRECT TREX 450PRO SERIES FLYBARLESS MAIN ROTOR HOUSING	1
2	TREX 450PRO SERIES RUBBER DAMPER (PROVIDED IN ORIGINAL KIT)	2
3	TREX 450PRO SERIES FEATHERING SHAFT (PROVIDED IN ORIGINAL KIT)	1
4	M2 x 0.4 x 10MM SOCKET HEAD COLLAR CAP SCREW (PROVIDED IN ORIGINAL KIT)	1
5	M2 NUT (PROVIDED IN ORIGINAL KIT)	1
6	M2 x 0.4 x 6MM SOCKET HEAD CAP SCREW	2
7	TREX 450PRO SERIES FLYBARLESS WASHOUT CONTROL ARM ASSEMBLY (PROVIDED IN ORIGINAL KIT OR SOLD SEPARATELY)	2
8	M2 x 0.4 x 8MM SOCKET HEAD CAP SCREW	2
9	TREX 450PRO SERIES MAIN SHAFT (PROVIDED IN ORIGINAL KIT OR SOLD SEPARATELY)	1

NOTE: THE FLYBARLESS MAIN ROTOR HOUSING ENCOMPASSES THE LATEST TECHNOLOGIES FOR OPTIMUM SETUP OF THE FLYBARLESS MECHANICS. WITH DIRECT MOUNTED WASHOUT ARMS AND A SOLID M2 CLAMP DESIGN OF THE ROTOR HEAD TO THE MAIN SHAFT, THE NEW DESIGN IS CAPABLE OF PROVIDING THE HIGHEST-PRECISION CONTROL POSSIBLE FOR THE FLYBARLESS ELECTRONICS.

MAKE SURE TO USE LOCTITE 243 (BLUE) OR EQUIVALENT ON ALL METAL-TO-METAL FASTENERS TO PREVENT LOOSENING DURING FLIGHT. TO ACHIEVE THE BEST POSSIBLE SETUP AND PERFECT ALIGNMENT OF THE FLIGHT MECHANICS, IT IS RECOMMENDED TO USE THE FOLLOWING ALIGN FLYBARLESS COMPONENTS:

MAIN SHAFT: H45022, TREX 450PRO MAIN SHAFT
FLYBARLESS GRIPS: H45118, TREX 450PRO FL MAIN ROTOR HOLDER SET
WASHOUT ARMS: H45134, TREX 450FL METAL CONTROL ARM
LINKAGES: H45116, TREX 450FL LINKAGE ROD (A) SET



www.KDEDirect.com



www.KDEDirect.com
AT450P-MRHFB