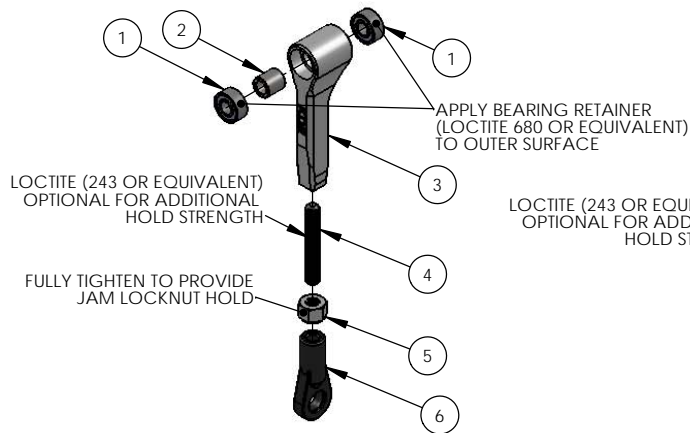


TREX550/600 SERIES XT MAIN ROTOR HEAD SYSTEM
AT550/600-XTS (AL 6061-T6)

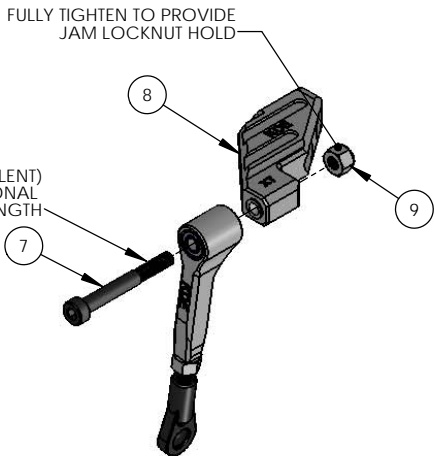
STEP 1

ASSEMBLE XT MAIN ROTOR GRIP CONTROL LINKS



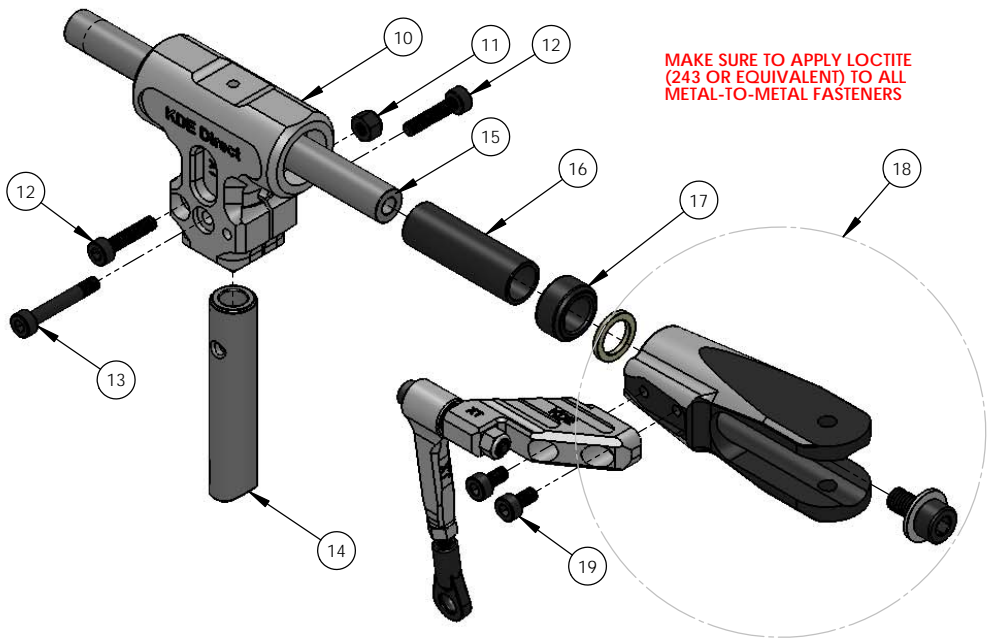
STEP 2

ASSEMBLE XT MAIN ROTOR HOLDER ARMS



STEP 3

ASSEMBLE XT MAIN ROTOR HEAD SYSTEM



ITEM NO.	DESCRIPTION	QTY.
1	683ZZ RADIAL BALL BEARING	4
2	KDE DIRECT TREX 550/600 SERIES MAIN ROTOR GRIP CONTROL LINK, XT BEARING COLLAR (STAINLESS STEEL, 4.0MM x 4.75MM x 5.0MM)	2
3	KDE DIRECT TREX 550/600 SERIES MAIN ROTOR GRIP CONTROL LINK, XT	2
4	M3 x 0.5 x 20MM SOCKET HEAD SET SCREW, CUP POINT	2
5	M3 x 0.5 NYLON-INSERT LOCKNUT	2
6	KDE DIRECT 550/600 SERIES BALL LINK, HEAVY-DUTY	2
7	KDE DIRECT TREX 550/600 SERIES MAIN ROTOR HOLDER ARM V2, XT M3 x 0.5 x 26.5MM SOCKET HEAD COLLAR CAP SCREW, CLASS 12.9	2
8	KDE DIRECT TREX 550/600 SERIES MAIN ROTOR HOLDER ARM V2, XT	2
9	M3 x 0.5 NYLON-INSERT LOCKNUT	2
10	KDE DIRECT TREX 550/600 SERIES FLYBARLESS MAIN ROTOR HOUSING, XT	1
11	M3 x 0.5 NYLON-INSERT LOCKNUT (PROVIDED IN ORIGINAL KIT)	1
12	M3 x 0.5 x 14MM SOCKET HEAD CAP SCREW	2
13	M3 x 0.5 x 20MM SOCKET HEAD COLLAR CAP SCREW (PROVIDED IN ORIGINAL KIT)	1
14	ALIGN TREX 550/600 SERIES DFC MAIN SHAFT (PROVIDED IN ORIGINAL KIT OR SOLD SEPARATELY, H60243, H60247, OR H6NH001XXW)	1
15	ALIGN TREX 550/600 SERIES FEATHERING SHAFT (PROVIDED IN ORIGINAL KIT OR SOLD SEPARATELY, H60H001XX)	1
16	ALIGN TREX 550/600 SERIES FEATHERING SHAFT SLEEVE (PROVIDED IN ORIGINAL KIT OR SOLD SEPARATELY, HN6061)	1
17	ALIGN TREX 550/600 SERIES DFC HEAD DAMPER (PROVIDED IN ORIGINAL KIT OR SOLD SEPARATELY, H60244)	2
18	ALIGN TREX 550/600 SERIES METAL MAIN ROTOR HOLDER (PROVIDED IN ORIGINAL KIT OR SOLD SEPARATELY, H60204)	2
19	M3 x 0.5 x 6MM SOCKET HEAD CAP SCREW	4

NOTE: THE XT MAIN ROTOR HEAD SYSTEM ENCOMPASSES THE LATEST TECHNOLOGIES FOR OPTIMUM AND ROBUST SETUP OF THE FLYBARLESS MECHANICS. INSTALLATION IS RELATIVELY SIMPLE AND WITH THE FULLY LOCKNUT-RETAINED SETUP, CAN BE UNIVERSALLY ADJUSTED FOR PRECISION PITCH CONTROL.

STEP 1: ASSEMBLE THE XT MAIN ROTOR GRIP CONTROL LINKS AS SHOWN. ONCE THE CONTROL LINK IS BUILT, THE M3 x 20MM SOCKET HEAD SET SCREW CAN BE ADJUSTED IN LENGTH FOR FINE-TUNING THE PITCH CONTROL. ONCE THE OPTIMAL HEIGHT IS REACHED, TIGHTEN THE M3 LOCKNUT FULLY TO JAM LOCK THE SET SCREW IN PLACE (AND PROVIDE VIBRATION RESISTANT HOLD TO THE COMPONENTS).

STEP 2: ASSEMBLE THE XT MAIN ROTOR HOLDER ARMS AS SHOWN. FULLY TIGHTEN BOTH THE M3 SOCKET HEAD COLLAR CAP SCREW AND THE M3 LOCKNUT TO JAM LOCK THE COMPONENTS IN PLACE. PRESSURE ON THE BEARING CAN BE ADJUSTED IN THIS MANNER TO PROVIDE THE OPTIMAL SMOOTHNESS/SLOP-FREE SETUP TO YOUR OWN PERSONAL LIKING.

STEP 3: ASSEMBLE THE XT MAIN ROTOR HEAD SYSTEM AS SHOWN. FOR MORE INFORMATION ON FULL INSTALLATION OF THE ALIGN MAIN ROTOR HOLDERS, PLEASE REFER TO THE ORIGINAL ALIGN MANUAL PROVIDED WITH YOUR KIT. FULLY TIGHTEN ALL HARDWARE AND MAKE SURE TO APPLY LOCTITE (243 OR EQUIVALENT) TO ALL METAL-TO-METAL FASTENERS.

