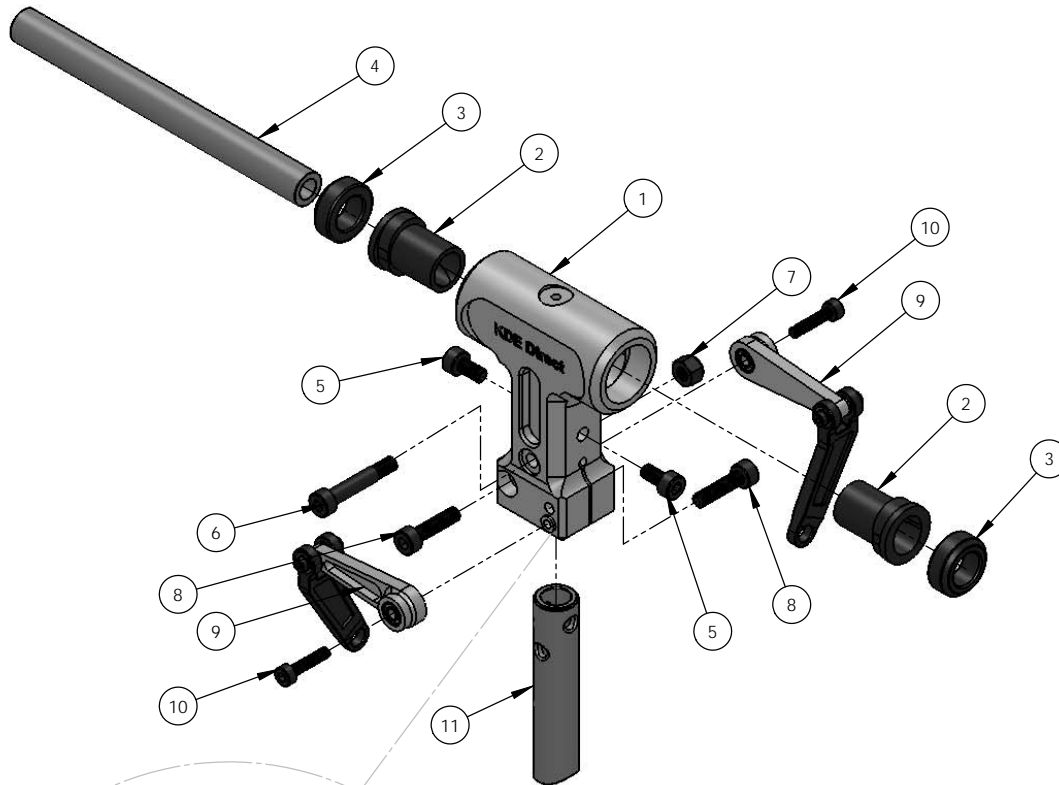


TREX700 SERIES FLYBARLESS MAIN ROTOR HOUSING AT700-MRHFB (AL 6061-T6)

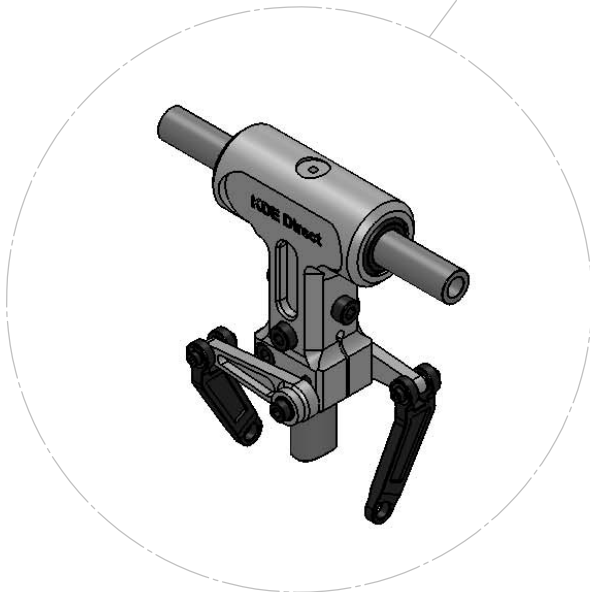


ITEM NO.	DESCRIPTION	QTY.
1	KDE DIRECT TREX 700 SERIES FLYBARLESS MAIN ROTOR HOUSING	1
2	TREX 700 SERIES FEATHERING SHAFT SLEEVE (PROVIDED IN ORIGINAL KIT)	2
3	TREX 700 SERIES RUBBER DAMPER (PROVIDED IN ORIGINAL KIT)	2
4	TREX 700 SERIES FEATHERING SHAFT (PROVIDED IN ORIGINAL KIT)	1
5	M4 x 0.7 x 8MM SOCKET HEAD CAP SCREW (PROVIDED IN ORIGINAL KIT)	2
6	M4 x 0.7 x 24MM SOCKET HEAD COLLAR CAP SCREW (PROVIDED IN ORIGINAL KIT)	1
7	M4 NYLON LOCKNUT (PROVIDED IN ORIGINAL KIT)	1
8	M4 x 0.7 x 16MM SOCKET HEAD CAP SCREW	2
9	TREX 700 SERIES FLYBARLESS WASHOUT CONTROL ARM ASSEMBLY (PROVIDED IN ORIGINAL KIT OR SOLD SEPARATELY)	2
10	M3 x 0.5 x 14MM SOCKET HEAD CAP SCREW	2
11	TREX 700 SERIES FLYBARLESS MAIN SHAFT (PROVIDED IN ORIGINAL KIT OR SOLD SEPARATELY)	1

NOTE: THE FLYBARLESS MAIN ROTOR HOUSING ENCOMPASSES THE LATEST TECHNOLOGIES FOR OPTIMUM SETUP OF THE FLYBARLESS MECHANICS. WITH DIRECT MOUNTED WASHOUT ARMS AND A SOLID M4 CLAMP DESIGN OF THE ROTOR HEAD TO THE MAIN SHAFT, THE NEW DESIGN IS CAPABLE OF PROVIDING THE HIGHEST-PRECISION CONTROL POSSIBLE FOR THE FLYBARLESS ELECTRONICS.

MAKE SURE TO USE LOCTITE 243 (BLUE) OR EQUIVALENT ON ALL METAL-TO-METAL FASTENERS TO PREVENT LOOSENING DURING FLIGHT. TO ACHIEVE THE BEST POSSIBLE SETUP AND PERFECT ALIGNMENT OF THE FLIGHT MECHANICS, IT IS RECOMMENDED TO USE THE FOLLOWING ALIGN FLYBARLESS COMPONENTS:

MAIN SHAFT: H70035, TREX 700FL MAIN SHAFT
FLYBARLESS GRIPS: HN7116/HN7123 OR HN7096, TREX 700FL MAIN ROTOR GRIP SET
WASHOUT ARMS: HN7124QF, TREX 700FL METAL CONTROL ARM
LINKAGES: HN70066, TREX 700FL LINKAGE ROD (A) SET



www.KDEDirect.com



www.KDEDirect.com
AT700-MRHFB