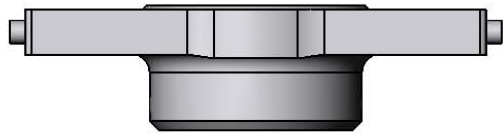
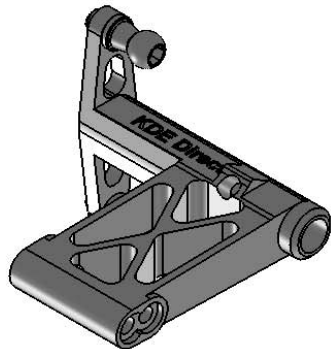
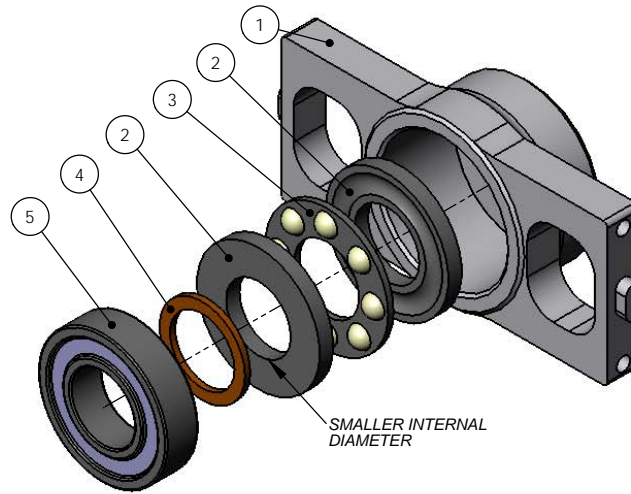


TREX700E THRUSTED METAL BEARING BLOCKS AND ELEVATOR LEVER SET

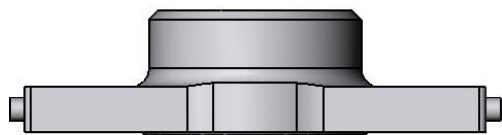
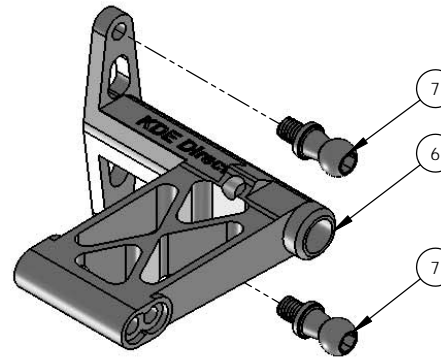
AT700E-MBB (AL 6061-T6)



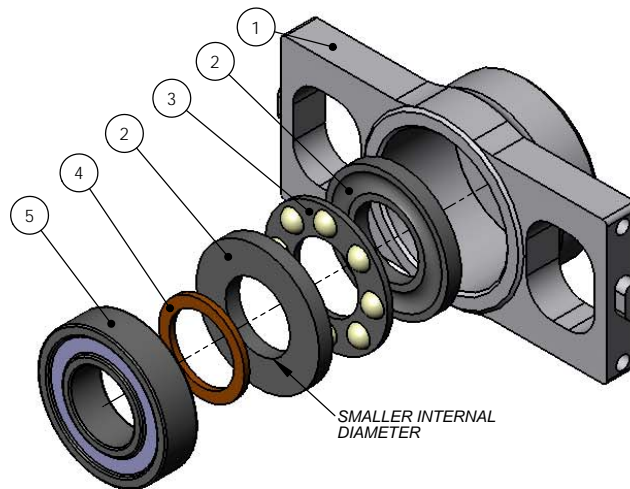
UPPER METAL BEARING BLOCK



ELEVATOR LEVER UPGRADE



LOWER METAL BEARING BLOCK



ITEM NO.	DESCRIPTION	QTY.
1	T700E THRUSTED METAL BEARING BLOCK	2
2	THRUST BEARING RACE 23MM	4
3	THRUST BEARING BALL CONTAINER 23MM	2
4	THRUST BEARING SPACER 12x16x1MM	2
5	RADIAL BALL BEARING 6901ZZ	2
6	T700E ELEVATOR LEVER UPGRADE	1
7	LINKAGE BALL B (M3 x 4MM) (PROVIDED IN ORIGINAL KIT)	2

NOTE: THE THRUSTED METAL BEARING BLOCKS HAVE BEEN CNC MACHINED TO PRECISE TOLERANCES FOR THE BEARINGS. WHEN INSERTING THE RADIAL BEARINGS, ALIGN THE BEARING TO THE BORE ACCURATELY AND THEN PRESS IN BY HAND. IF A PRESS-FIT IS REQUIRED, BE CAREFUL TO ONLY APPLY PRESSURE TO THE OUTER-EDGE OF THE BEARING TO PREVENT DAMAGE TO THE INTERNAL COMPONENTS.

DO NOT PUSH ON THE INNER, ROTATING RACE OF THE BEARING DURING INSTALLATION.

THE RADIAL BEARING IS DESIGNED TO FLOAT VERTICALLY IN THE BEARING BLOCKS, WHICH ALLOWS ALL AXIAL FORCES TO BE TRANSFERRED TO THE THRUST BEARINGS. LOCTITE IS NOT REQUIRED FOR PROPER OPERATION AND ANY RADIAL LOAD WILL LOCK THE OUTER RACE OF THE RADIAL BEARING AGAINST THE HOUSING DURING FLIGHT.

THE INCLUDED ELEVATOR LEVER UPGRADE PROVIDES OPTIMAL LINKAGE GEOMETRY TO THE ELEVATOR SERVO AND PREVENTS INTERFERENCE ISSUES WITH THE THRUSTED METAL BEARING BLOCKS. FOR THE INSTALL, USE THE ORIGINAL M3 X 4MM LINKAGE BALLS B (PROVIDED WITH THE STOCK ELEVATOR LEVER) AND INSTALL ON THE ARM TOWARDS THE CENTER OF THE HELICOPTER (SEE FIGURE FOR REFERENCE).

www.KDEDirect.com



www.KDEDirect.com
AT700E-MBB