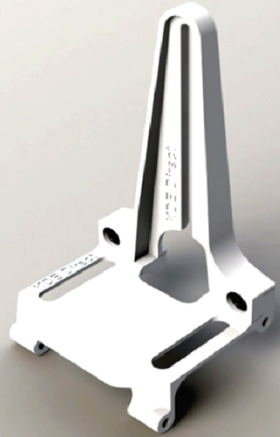


KDE DIRECT ALIGN TREX 550 SERIES ANTI-ROTATION BRACKET

The prototype design was an innovative concept that provided a great upgrade for the TREX 550E, but the KDE Direct team wanted to take the design to the next level.

PRODUCTION RELEASE



PROTOTYPE DESIGN

GUIDE RAIL GEOMETRY

Similar to the TREX 450 PRO design, the new guide rail provides a bind-free, wear-resistant surface for the full-range of elevator anti-rotation pin motion.

GUIDE RAIL ALIGNMENT GEOMETRY

Allows for perfect alignment of the guide rail to the base, critical to prevent unwanted flex and problematic binding in the guide rail during installation.

EXTENDED ELECTRONICS MOUNT

Compatible with a wide-range of Gyro and Flybarless sensors, including full-size electronics that require a large mount footprint (such as the VBAR sensor).



KDEDirect

