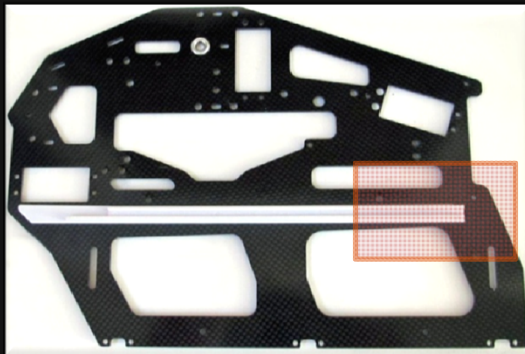


KDE DIRECT ALIGN TREX 700E SERIES RECEIVER MOUNT UPGRADE

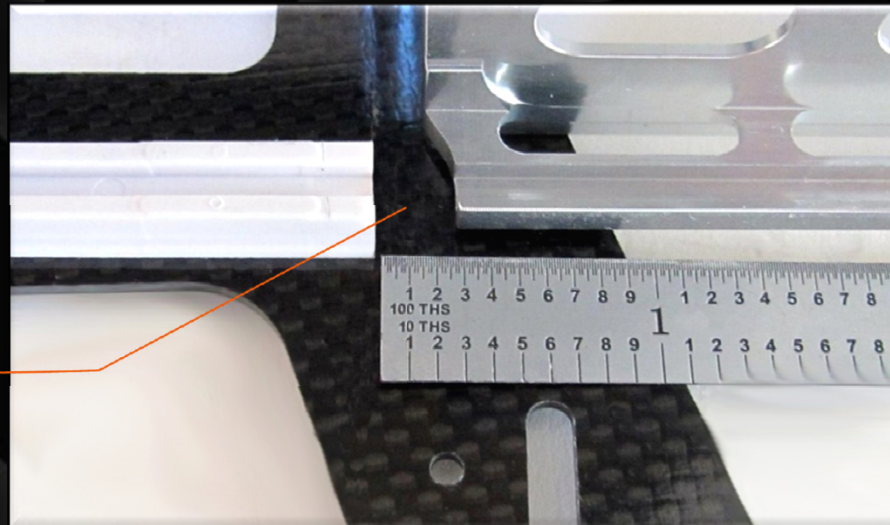
The latest ALIGN TREX 700E carbon main-frames (H70041 and H70042) have an extended battery rail that interferes with the AT700E-RMU design. In an effort to maintain the advantages of the KDE Direct design, a simple modification to the plastic rail is required during installation.



STOCK FRAMES

GUIDE RAIL MODIFICATION

Using a Dremel cut-off wheel and/or X-ACTO knife, remove the plastic rail material approximately 0.9" (23 mm) from the front edge of the carbon main-frames. Be careful not to cut into the carbon main-frames during the operation to maintain the integrity of the area.



RECEIVER MOUNT INSTALLATION

Once the modification is complete, the KDE Direct design will provide significant advantages in strength, adjustability, and aesthetics for the battery rail system.

