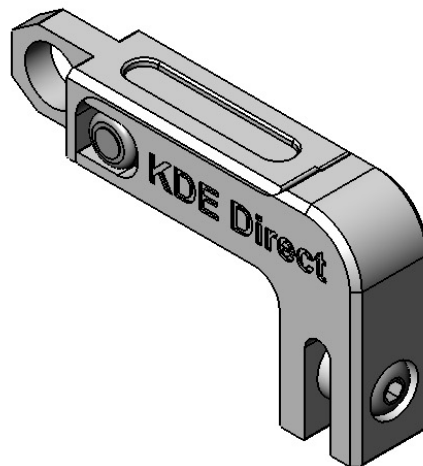
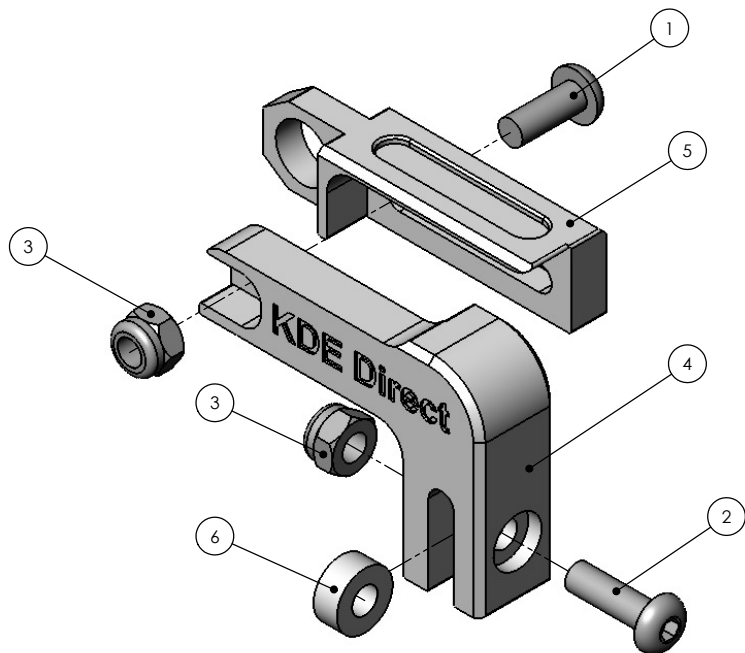


**SPEKTRUM-JR NECK STRAP BALANCER ASSEMBLY UPGRADE**  
**SJR-NSB (AL 6061-T6)**



ITEM NO.	DESCRIPTION	QTY.
1	M3 x 0.5 x 8MM BUTTON HEAD SOCKET HEAD CAP SCREW STAINLESS S.	1
2	M3 x 0.5 x 10MM BUTTON HEAD SOCKET HEAD CAP SCREW STAINLESS S.	1
3	M3 x 0.5 NYLON LOCKNUT, ALLOY STEEL CLEAR ZINC	2
4	SPEKTRUM-JR NECK STRAP BALANCER BASE	1
5	SPEKTRUM-JR NECK STRAP BALANCER SLIDE	1
6	SPEKTRUM-JR NECK STRAP BALANCER ADAPTER	1

**NOTE: THE SPEKTRUM-JR NECK STRAP BALANCER ASSEMBLY UPGRADE PROVIDES THE BEST MATCH OF AESTHETICS AND ADJUSTABILITY TO GIVE THE PILOT THE BEST TRANSMITTER BALANCE FOR OPTIMUM FLIGHT PERFORMANCE. THE BENEFITS OF THE NEW UPGRADE INCLUDE:**

1. ALL LOCKNUTS ARE FLUSH-CAPTURED TO THE CNC MACHINED COMPONENTS, PROVIDING EASY INSTALLATION AND A CLEAN, HIGH-QUALITY FINISH.
2. TIGHTLY CONTROLLED TOLERANCES BETWEEN THE BASE AND SLIDE COMPONENTS REDUCE SLOP AND PRODUCE A SOLID CONNECTION BETWEEN THE TRANSMITTER AND STRAP.
3. THE BASE DESIGN USES A SOLID 90° ELBOW, ELIMINATING ANY UNNECESSARY ADJUSTMENT POINTS THAT LOOSEN AND/OR INACCURATELY BALANCE DURING FLIGHT.

**DUE TO THE CAPTURED LOCKNUTS USED IN THE UPGRADE, LOCTITE IS NOT REQUIRED ON ANY OF THE COMPONENTS. RATHER, SIMPLY INSTALL THE UPGRADE, BALANCE THE TRANSMITTER TO YOUR LIKING, AND GO HAVE FUN!**



[www.KDEDirect.com](http://www.KDEDirect.com)

[www.KDEDirect.com](http://www.KDEDirect.com)  
**SJR-NSB**